



# Point Loma Yacht Club Presents Crew of Two Around the Coronado's Saturday July 22nd, 2017

Hosted By Point Loma Yacht Club  
Ullman Sails & Fiddlers Green Restaurant

## SAILING INSTRUCTIONS

### 1. RACING RULES:

- 1.1. This regatta will be governed by the rules as defined in *The Racing Rules of Sailing for 2017-2020*, (RSS) including US Sailing Prescriptions.
- 1.2. USCG "Navigation Rules, International-Inland"; Bylaws and Class Rules of PHRF Southern California and PHRF San Diego; The Entry Form and these Sailing Instructions and any amendments hereto will apply.
- 1.3. Amendments to these Standard Sailing Instructions will be distributed using the PLYC web site [www.pointlomayachtclub.org](http://www.pointlomayachtclub.org) and will be available at the Committee Boat on race day when code flags "L" and "A" are on hoist during Race Check-In.
- 1.4. PHRF Random Leg "RLC" Ratings will be used to score all races. PHRF non-spinnaker offsets will not be used for scoring. Yachts shall carry all "Standard Equipment" listed in the PHRF Southern California Class Rules for Category 4 events ([www.phrfsocal.org/class](http://www.phrfsocal.org/class)).
- 1.5. Classes, class pennants and pennant colors

**Class pennants must be flown from the backstay of all yachts while racing.**

CLASS	CLASS DESCRIPTION	BACKSTAY PENNANT
Class A	Multihull Spinnaker & Non-Spinnaker all RLC ratings	1 (one)
Class B	Non-Spinnaker RLC Ratings 139 sec/mile and below	2 (two)
Class C	Non-Spinnaker RLC Ratings 140 sec/mile and above	3 (three)
Class D	Spinnaker RLC Ratings 119 sec/mile and below	4 (four)
Class E	Spinnaker RLC Ratings 120 sec/mile and above	5 (five)
Class F	OPEN CLASS Monohull Spinnaker & Non-Spinnaker all RLC Ratings	6 (six)

**NOTE: Classes A, B, C, D, & E maximum two (2) crew, including skipper. Class F has no crew limit.**

**NOTE: AUTO HELMS | AUTO PILOTS ARE NOT ALLOWED**

- 1.6. Racing boats encountering non-racing craft shall conform to 1.2 above, USCG Navigation Rules, International-Inland. Be advised that no vessel has the "right-of-way" over a large ship in the deep-water channel. USCG Navigational Rules will be strictly enforced.  
*Any boat participating in a PLYC race that is identified in any complaint from the Coast Guard, Harbor Pilot or commercial vessel captain that has sounded 5 horns will be presumed to have infringed this instruction. RRS 60.2, 63.1 and A5 are modified to add that the Race Committee (R/C) may disqualify a yacht infringing this instruction without a hearing.*
- 1.7. NAVAL and CRUISE SHIP PROTECTION ZONE: No vessel is allowed within 100 yards of NAVAL and CRUISE SHIP traffic.

2. **ENTRIES & CHECK-IN:**
  - 2.1. The Crew of Two Coronado's Race **REQUIRES** an **ENTRY FEE of \$20 for non PLYC Members**
  - 2.2. The Co2 race **REQUIRES** an **ENTRY FORM** from each boat wishing to participate.
  - 2.3. Entry forms are available on PLYC's web site [www.pointlomayachtclub.org](http://www.pointlomayachtclub.org), PLYC's Clubhouse at Marina Cortez, and from the R/C boat and must be submitted by Friday July 21<sup>st</sup>. 2000 hours. (08:00pm)
  - 2.4. You may submit your Race Entry by photo text to 619-456-1528 or email to [info@pointlomayachtclub.org](mailto:info@pointlomayachtclub.org)
  - 2.5. Yachts will have completed their "Check-In" when they check-in with and are acknowledged by the R/C.
  - 2.6. Check-In will commence when the "L" flag is hoisted. After the lowering of the "L" flag, check-in, and radio check-in will continue at the discretion of the Race Committee on VHF channel 68.
  
3. **STARTING & RACING AREAS:**
  - 3.1. The **STARTING AREA** will be in the vicinity of mid-Harbor Island across from Harbor Island Park.
  - 3.2. **FIRST START** will be at approximately 1100am. The First Warning will be approximately at 10:55am
  - 3.3. The **RACING AREA** covers the general locations known as San Diego Bay, Coronado Islands, and the Pacific Ocean.
  - 3.4. For navigation, refer to NOAA Chart #18765.
  
4. **THE START:**
  - 4.1. All races will be started in accordance with RRS 26.
  - 4.2. The starting area is in the vicinity of mid-Harbor Island across from PLYC at Harbor Island Park.
  - 4.3. A distance buoy may be streaming aft from the Race Committee vessel and this buoy is considered part of the Race Committee vessel.
  - 4.4. Yachts whose preparatory signal **HAS NOT** been made shall keep clear of the starting area and of all vessels attempting to start.
  - 4.5. The first warning will be approximately 10:55am. After the first start, subsequent classes will start at five (5) minute intervals.
  - 4.6. As a courtesy to participants, an attention signal consisting of 5 horn blasts may be used to alert all yachts that the one minute to the first 5 minute starting sequence is to begin.
  - 4.7. The start sequence for all classes will be:
    - Class A Multihull Spinnaker - Flag #1
    - Class B Non-Spinnaker PHRF 139 and below - Flag #2
    - Class C Non-Spinnaker PHRF 140 and above - Flag #3
    - Class D Spinnaker PHRF 119 and below - Flag #4
    - Class E Spinnaker PHRF 120 and above - Flag #5
    - Class F Open Class Spinnaker and Non-Spinnaker All Ratings - Flag #6
  
5. **RECALLS:**
  - 5.1. Individual recalls will be signaled by one sound signal, in accordance with RRS 29.1.
  - 5.2. Race Committee will attempt to hail "On Course Side" (OCS) yachts on VHF 68. The failure of a yacht to hear or receive a hail shall not be grounds for redress.
  - 5.3. General recalls will be signaled by hoisting the "First Substitute" flag and two (2) sound signals, in accordance with RRS 29.2. The warning signal for a new start for the recalled class shall be made as close to one minute after the "First Substitute" is **removed**. The warning signal shall be one (1) sound. The starts for any succeeding classes shall follow the new start.
  - 5.4. It is the intent of the Race Committee to avoid General Recalls by using the Individual Recall to the maximum extent possible.
  
6. **COURSE:**
  - 6.1. After starting, round North Coronado Island to port and finish. Handicap Distance = 33.9 n.m.
  - 6.2. The course will not be changed after the start.
  - 6.3. If conditions require, the race may be abandoned; In the event of abandonment, notice will be given on VHF Channel 68 on the hour and at fifteen-minute intervals thereafter, for two hours.
  
7. **THE FINISH:**
  - 7.1. The race will finish between San Diego Channel Buoy either Buoy #9 or Buoy #10 when a boat passes both on either port or starboard. A confirmed finish is when both buoys are aligned. Each vessel shall report their time to Race Committee via cellphone text with screen capture of your finish time to 619-456-1528.

**8. TIME LIMIT:**

- 8.1. The Race Committee will remain on call for finishing until sunset (1945 hours), Saturday, July 22, 2017. Yachts finishing after this time, or if the Race Committee is not on station, will take their time and correct it to GPS time. A yacht's "Finish" will be when the bow passes Buoy #9, leaving it to port. Report your time to the PLYC clubhouse prior to 1000 hours on Sunday, July 23, 2017. Boats finishing after 1000 hours on Sunday, July 23, 2017, or whose time is not reported in accordance with the above, will be scored DNF.
- 8.2. A yacht that retires from the race (or chooses not to compete after checking in) **MUST NOTIFY THE RACE COMMITTEE** Radio Channel 68 before leaving the course area or by leaving a telephone message at 619.456-1528. On the water notification can be accomplished by informing the Race Committee vessel by either (a) sailing (motoring) past the R/C vessel OR (b) radioing the R/C vessel (VHF 68). Failure to do this may result in disqualification from this race and rejection of entry for other PLYC races.

**9. SCORING:**

- 9.1. In accordance with RSS Appendix A3 of the Racing Rules: *The time of a boat's starting signal shall be her starting time, and the order in which boats finish a race shall determine their finishing places. However, when a handicap or rating system is used a boat's corrected time shall determine her finishing place.*

**10. PROTESTS:**

- 10.1. Protests shall be initiated in compliance with Rule 61 except as amended by these Sailing Instructions.
- 10.2. Skippers are required to inform the Race Committee after finishing and/or before retiring from the course area of the sail number(s) or name(s) of the yacht(s) being protested.
- 10.3. The Protest Procedure (RRS Part 5) is modified here. After a valid protest is lodged there will be an arbitration hearing involving one Rules Judge, the Protestee, and the Protestor. The arbitration will be held at Fiddlers Green at 1200 hours on Sunday, July 23, 2017. If the arbitration participants agree that the protested or protesting yacht infringed a rule, the judge will penalize the infringing yacht by applying a maximum 60 minute time penalty or a disqualification. Arbitrations will not be reopened and arbitration rulings and penalties are not subject to redress. If the arbitration fails to resolve the protest, a regular protest hearing will be held at a time and place to be determined by the Protest Committee Chairman and the parties to the protest. Protest Committee penalties shall be time penalties. The Minimum Time Penalty shall be 60 seconds with a DSQ equal to 10 hours.

**11. ALTERNATIVE PENALTIES:**

- 11.1. The RRS 44.2 (the Two Turns Penalty) will apply. Note that this rule is not modified and that it requires two 360 degree turns including tacks and jibes.

**12. RADIO:**

- 12.1. The Race Committee will monitor VHF channel 68 except during any starting sequence.

**13. RESPONSIBILITY, PERSONAL FLOTATION, AND SAFETY:**

- 13.1. It is the sole responsibility of the skipper of each yacht to decide whether or not to start or to continue to race.
- 13.2. While racing each competitor will be required to have onboard all USCG required safety devices and flotation devices.
- 13.3. Notwithstanding any safety requirements, the ultimate safety of a yacht and her crew is the sole and inescapable responsibility of the owner or charterer. Owners must do their part to ensure that the yacht is fully sound, thoroughly seaworthy and manned by an experienced crew who are physically fit. Owners must be satisfied as to the soundness of hull, spars, rigging, sails, gear and shall ensure that all safety equipment is property maintained and stowed and that the crew knows where it is kept and how it is used.

**14. REQUIRED EQUIPMENT:**

- 14.1. All USCG requirements for that class of yacht and number of persons aboard.
- 14.2. A horseshoe or throw cushion readily available.
- 14.3. An engine capable of driving the yacht in calm water with no sails at a speed of 1.0 times the square root of the LWL in knots, or 6 knots (whichever is less), and at least three hours of fuel. Unanticipated engine malfunction shall not constitute non-compliance. (See PHRF Class Rules for exemptions to this requirement.)
- 14.4. First aid kit and manual.
- 14.5. Fixed bow pulpit, lifelines and supports. (See PHRF Class Rules for exemptions.)
- 14.6. A radar reflector and three (3) pyrotechnic distress signals.
- 14.7. One anchor adequate to hold in storms, including the manufacturer's recommended length of chain or wire rode and a length of appropriate strength rode for safe anchoring.
- 14.8. Whistles attached to life jackets.
- 14.9. VHF radio with at least three two-way channels, two of which shall be channels 16 and 68.
- 14.10. Functional running lights.

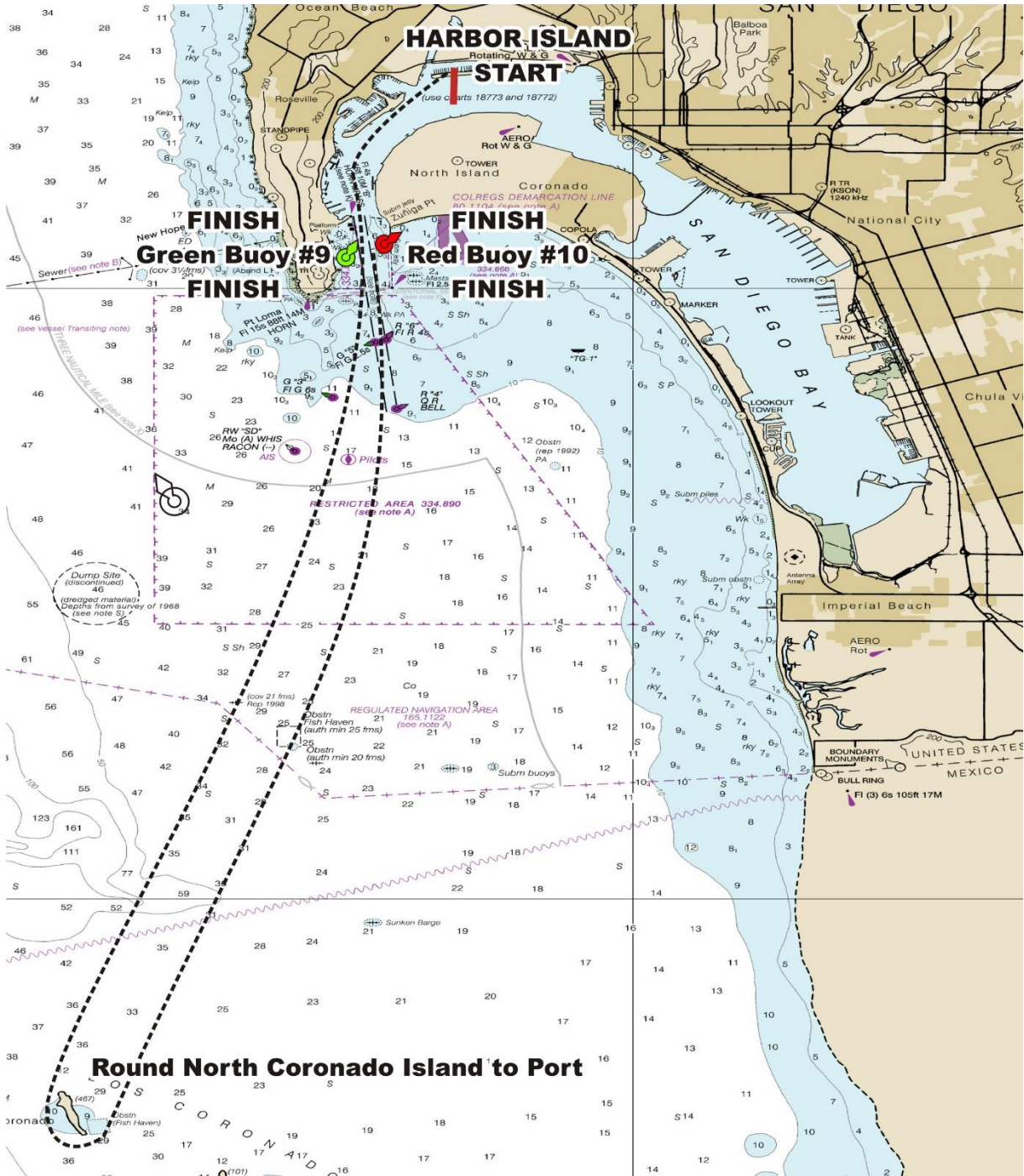
**15. SAIL NUMBERS:**

15.1. All required sails shall have clearly visible sail numbers. Sails with numbers other than those used for check-in purposes, are not permitted unless registered with the R/C at check-in. Failure to comply may necessitate DNC scoring of a yacht with incorrect sail numbers.

**16. RACE RESULTS, TROPHY PRESENTATION, & POST RACE ACTIVITIES:**

16.1. Trophies will be presented at 1200 hours on Sunday, July 23rd, 2017 at Fiddlers Green Restaurant. Food and Drink will be provided for racers and guests.

Start between Race Committee boat and pin end of line in front of Point Loma Yacht Clubhouse located at 1880 Harbor Island Drive Marine Cortez, near Harbor Island Park. The race continues out San Diego Channel to Coronado Del Norte' (Coronado North Island) All racers will take the island to port when rounding, and head home with the finish between Buoy 9 and 10. Race distance is approximately 33.9 nautical miles.





# CREW OF TWO 2017

